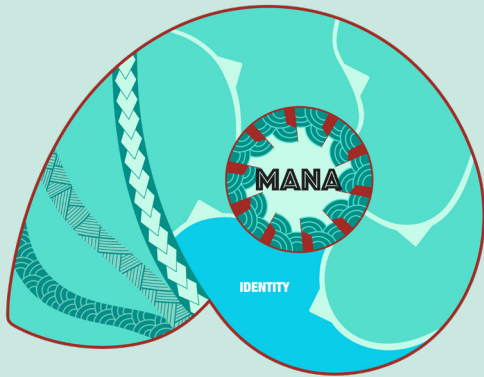


IDENTITY ACTION SHEET



Some of Pasifika's young people were born in Australia, while others have moved to Australia from New Zealand or Pacific islands.

In Pasifika cultures, relationships, family, community, respect, spirituality and responsibility are some of the important values.

To Pasifika youth, their identity strongly defines who they are. In Australia, Pasifika young people's identity is complex, diverse, and multi-faceted.

The formation and development of the Pasifika identity is based on their socioeconomic, cultural and educational trajectories.



Ma·koa·re

Learn to pronounce students' and families' Pasifika names.

Challenge and reject biases and stereotypes towards Pasifika students and families.

TEACHERS



Recognise that Pasifika students can be shy to share answers and opinions in class.

100

Set high expectations of Pasifika students as well as other students.



Encourage hands-on teaching and learning activities.

Learn about Pasifika students' home responsibilities (e.g. church, part-time job commitments) and provide learning support if needed.



Encourage students to share their cultures and languages with other students.



Provide genuine and constructive advice on students' pathway options instead of suggesting Pasifika students to consider VCE Vocational Major and Victorian Pathways Certificate only (formerly known as VCAL).



Provide additional literacy, (e.g. financial literacy) and numeracy support if needed.



YOUTH WORKERS

Recognise rich experience and cultures of Pasifika families and communities; e.g. ask about the families' trajectories and languages that they speak.

Establish mutual respect with young people and their families.



"WOFF" (WRITE OFF)

Avoid/explain jargon and context-specific terminologies to reduce communication barriers.

Help students with goal-setting.

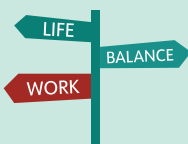


Discuss study options with families and students.

Collaborate with bi-cultural Pasifika professionals and communities.

Share information regarding financial supports (e.g., post-high school scholarships) and citizenship information to students and families.

(Pasifika Youth Workers) Develop work-life balance and set work-life boundaries.



WHOLE SCHOOL

HELLO SIR | HELLO ___ ✓

Learn to pronounce and spell students' and families' Pasifika names instead of addressing parents as either "Sir" or "Madam".



Always acknowledge students' and families' linguistic and cultural identities; (e.g., ask students about their cultural and linguistic backgrounds).

Include Pasifika cultures in school events (e.g. Harmony Day/Week) and invite Pasifika students to perform (e.g. Haka) and share their cultures regularly.

Recognise and celebrate diversity of Pasifika students trajectories and identities.



Challenge and reject biases and stereotypes towards Pasifika students and families.

Implement and review of anti-bullying programs across the school.



Participate in Pasifika cultural-competency training and collaborate with Pasifika communities.



POLICE OFFICERS

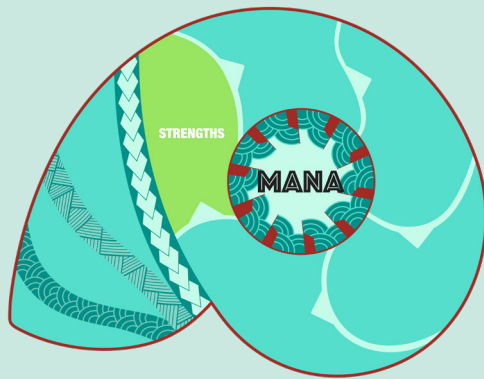
Recognise rich experience and cultures of Pasifika families and communities; e.g. ask young people about their cultures.

Establish mutual respect with young people and their families.



Avoid cultural stereotypes during interaction with Pasifika youths and families.

STRENGTHS ACTION SHEET



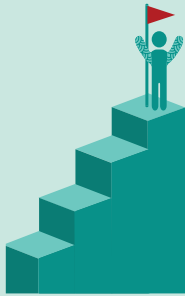
Pasifika youth in Australia can struggle and experience challenges with their feeling of belonging due to stereotypes and a lack of positive cultural image.

The additional challenges can be complicated by a misunderstanding of the Pasifika youth physical and social characteristics.

Such misunderstandings can affect young people's school engagement as well as their sense of belonging.

Hence, there needs to be a focus on Pasifika youth strengths as a key element to change stereotype and discriminations.

TEACHERS



Acknowledging that Pasifika students and/or families experience difficulties and challenges that need attention and support.



Celebrate Pasifika students' achievements.



Learn about Pasifika students and families' strengths.



Advocate for Pasifika students' strengths and positive cultural image.



Build on students' abilities and strengths within their zone of proximal development and potentials.



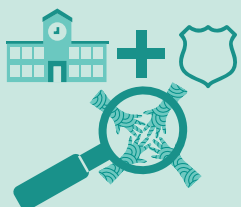
YOUTH WORKERS

Recognise the strengths of Pasifika youth and families.



Identify individual Pasifika youth's strengths.

Work closely with families and schools to bridge cultural and communication challenges.



Help schools and police to recognise the strengths of Pasifika families.



WHOLE SCHOOL



Celebrate Pasifika students' achievements.



Listen to and respect student's and families' views and needs.



Learn about Pasifika students and families' strengths.



Promote a positive Pasifika image by celebrating Pasifika cultures at school events such as Cultural Performance 4C's.

(Cultivating Creatives Cultures with Communities).



POLICE OFFICERS



Identify individual Pasifika youth's strengths: e.g., through informal conversations.

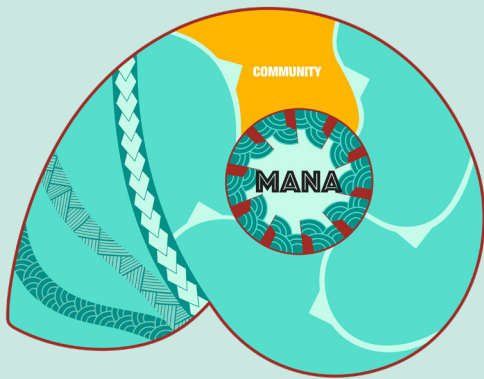
Encourage every Pasifika young person to reach their full potential.



Work closely with Pasifika community organisations (e.g. the Centre for Multicultural Youth) and bicultural youth workers to support Pasifika student's sense of belonging.



COMMUNITY ACTION SHEET



Community is an integral part of Pasifika cultures where community members and elders step up to support and celebrate with Pasifika young people.

The sense of community underpins Pasifika young people's preferences and actions in the way they engage, learn and stay well.

Actions based on the idea of supporting and promoting the notion of 'community' are fundamental to supporting Pasifika youth and their well being.

TEACHERS



Invite Pasifika community leaders as guest speakers.



Learn about students' community commitments.



Create learning communities in the class.



Help young people balance study and other commitments.



Encourage peer and group works in class.



YOUTH WORKERS

Respect Pasifika communities and avoid stereotypes.

RESPECT

Recognise young people's family and community commitments and provide support if needed.



Seek community advice when it comes to interacting with Pasifika young people and families.

HERE FOR YOU



Discuss about mental health and wellbeing with young people and families. Provide information about professional support if needed.



WHOLE SCHOOL



Recognise Pasifika cultures are community-oriented.



Collaborate with Pasifika communities.



Invite community leaders as guest speakers.



Co-host school events and festivals with Pasifika communities.



Share Pasifika events to the wider school community.

POLICE OFFICERS



Work with Pasifika communities.

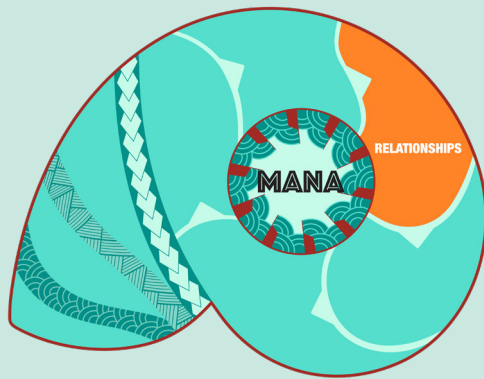
ADVICE: _____

Seek community advice (e.g. families; Pasifika youth workers) during interaction with Pasifika young people and families.



Recognise the critical role of the "village" (community) in supporting Pasifika young people's positive trajectories.

RELATIONSHIPS ACTION SHEET



Relationships are an important part of Pasifika values.

Positive relationships developed between Pasifika students, their families, and others who engage with them are vital ways to improve Pasifika students' school engagement, aspirations and education outcomes.

A need to understand Pasifika cultures to overcome communication barriers is fundamental to establishing positive relationships between young people and the key stakeholders.

TEACHERS



Understand the importance of family and communities in Pasifika cultures.

Engage in informal conversations (e.g., Talanoa) with students and families after class.



VOLUNTEER TODAY IS:

Create volunteer and leadership roles for Pasifika students to help with the class and other students.



Encourage authentic and active family participation in decision-making.



Respect Pasifika cultures.



Communicate students' achievements and good news to families/parents.



Promote group and peer activities.

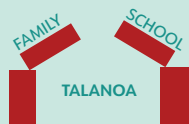


Warmly invite families for school/class activities.



YOUTH WORKERS

Engage in informal meetings/catchups with young people and families.



Bridge communication barriers between families and schools; e.g. explain jargon and have informal conversations/Talanoa.

Be respectful to the elders.



For non-Pasifika youth workers, be open to learn about different Pasifika cultures and traditions; e.g. attend cultural trainings and learn from bicultural colleagues/Pasifika communities.

WHOLE SCHOOL



Recognise the key roles of family and community in Pasifika students life.



Encourage authentic and active family participation in decision-making; e.g. students' study options.



Respect Pasifika cultures, e.g. celebrate Pasifika Festival.

Form links with local Pasifika communities, e.g. attending community events and meetings, inviting community leaders to give talks.



Organise Parent Information Night.

Establish Pasifika parent committee with regular face-to-face meetings. May provide additional support if families have younger children.



Identify school staff/teachers/educators/youth workers that Pasifika young people can go to.



POLICE OFFICERS



Recognise relationships are key values in Pasifika cultures.



Engage in informal meetings/catchups with young people and families to build trust.



Be open to learn about different Pasifika cultures and traditions.

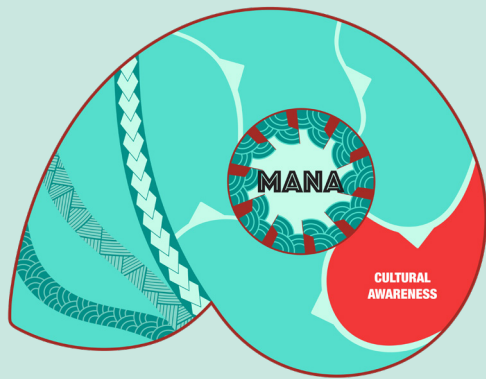
Establish mutual respect with young people and their families.



Participate in Pasifika cultural-competency training.

Collaborate with Pasifika communities.

CULTURAL AWARENESS ACTION SHEET



Pasifika young people are friendly, resilient, family-oriented with great potentials. The young people also shoulder extensive family and community responsibilities.

These commitments can range from doing family chores, looking after young siblings, working to support families financially to attending daily church activities.

Hence, there is a need to have the cultural awareness of Pasifika young people's cultural practices and commitments to better support their life trajectories.

TEACHERS



Learn about students' spirituality and commitments.



Provide additional support for students who struggle, for example, setting up a Breakfast Club.



Organise interpreters in meetings if needed.

HELLO = BULA!

Celebrate Pasifika students' languages and cultures, for example, learning basic words in students' home languages.



Support Pasifika students' wellbeing by having small informal conversations.



Provide key information in written forms if needed.



YOUTH WORKERS



Inspire Pasifika young people with Pasifika role models.



Encourage Pasifika young people to reach their potentials.



WHOLE SCHOOL



Provide additional supports for students who struggle, for example, setting up a Breakfast Club.



Increase awareness of all school staff around Pasifika cultures and responsibilities.



Encourage the use of the school library and introduce resources on Pasifika cultures.

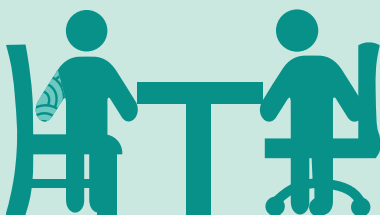


Encourage music and sports at school.



REVIEW

Implement and review of anti-bullying programs across the school.



Being mindful of recommending outside services such as counselling services.



POLICE OFFICERS



Recognise key Pasifika values.



Be open to learn about different Pasifika cultures and traditions.

"WOFF" (WRITE OFF)

Avoid using jargons.



Be respectful to Pasifika elders.

Overcome cultural stereotypes when interacting with Pasifika young people and communities.